

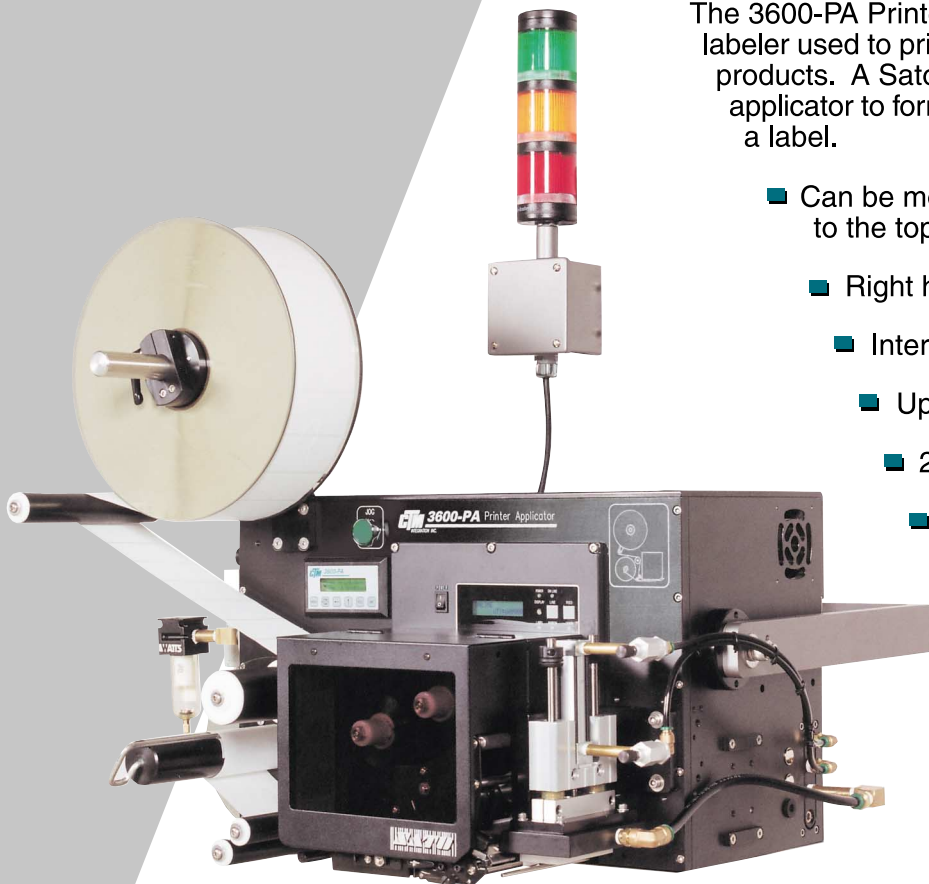


INTEGRATION INC.

3600-PA SERIES

LABEL PRINTER APPLICATOR

The 3600-PA Printer Applicator is a high speed, thermal transfer labeler used to print and apply pressure sensitive labels to various products. A Sato or Zebra® print engine is integrated into an applicator to form a self-contained unit to print variable data onto a label.



Sato Print Engine

- Can be mounted in almost any position to apply labels to the top, side or bottom of various products
- Right hand or left hand Sato and Zebra® versions
- Interchangeable printer modules
 - Up to 7.1" wide labels, up to 6.6" print width
 - 203 or 305 dpi print resolution
- Built-in bar codes and alpha-numeric fonts
 - Proven tamp-blow application
 - PLC control
 - User-friendly operator interface with easy-to read LCD display
- Quick access to set-up parameters
- Rugged and versatile for standard and custom applications
- Equipped with various onboard I/O signals prewired to external connector

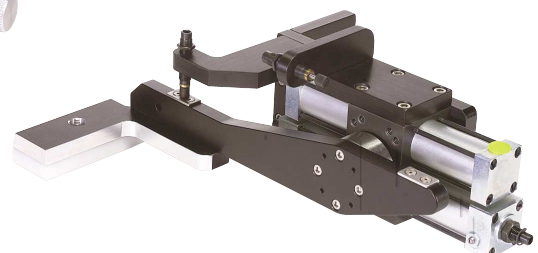
**Unit shown includes Optional features*



Zebra® Print Engines



Extended Peel Bar



Rotary Swing Tamp

Dimensions

31.5" L x 27.5" W x 23.5" H

Weight

Approx. 150 lbs.

Electrical

108-132 Volts AC, 5 Amps,
54/60 Hertz, Single Phase

Optional: **CE** version

220 Volts AC, 3 Amps,
50/60 Hertz, Single Phase

Pneumatic

90 psi., 3-5 cfm

Communications

RS 232, Parallel
Others available

Environmental

Operating 41 F to 104 F
(5 C to 40 C)

Storage -4 F to 104 F
(-20 C to 40 C)

Printing Method

Thermal Transfer
Direct Thermal

Print Resolution

203 or 305 dpi, Dependent
Upon Print Engine

Product Sensing

Photoelectric
PLC Input

Applicator Control

Micro PLC with Operator Key
Pad and 2 Line Display

Label Sizes

Sato 8485Se

Max. 5.25" x 10" L
Min. 1.0" W x 1.0" L

Sato 8459Se (direct thermal)

Max. 5.25" W x 10" L
Min. 1.0" W x 1.0" L

Sato 8460Se

Max. 6.5" W x 10" L
Min. 2.0" W x 1.0" L

Sato 8490Se

Max. 5.25" W x 10" L
Min. 1.0" W x 1.0" L

Zebra 172PAX3

Max. 7.1" W x 10" L
Min. 3.0" W x 3.0" L

Zebra 173PAX3

Max. 7.1" W x 8" L
Min. 3.0" W x 3.0" L

Note: Other label sizes
available, contact
CTM Integration

Print Resolution, Speed, Width

Sato 8485Se	8459Se	8460Se
203 dpi	203 dpi	203 dpi
12"/sec	5"/sec	8"/sec
5" W	4.4" W	6" W

Sato 8490Se

305 dpi, 8"/sec., 4.4" W

Zebra 172PAX3

203 dpi, 12"/sec., 6.6" W

Zebra 173PAX3

300 dpi, 8"/sec., 6.6" W

Labeling Speed

Dependent upon label size,
print speed and application
type

Fonts*

Various sizes and styles with
independent height and width
expansion; includes OCR A/B

Bar Codes*

EAN 8/13, Code 39, Code 93,
UPC A/E (with extensions),
Code 128, I 2 of 5, Maxicode,
DataMatrix, PDF417, Micro PDF,
CODABAR, MSI, POSTNET

Graphics*

Supports user defined fonts
and graphics including custom
logos

** For details, see programming
manual of printer manufacturer*

Features

Standard

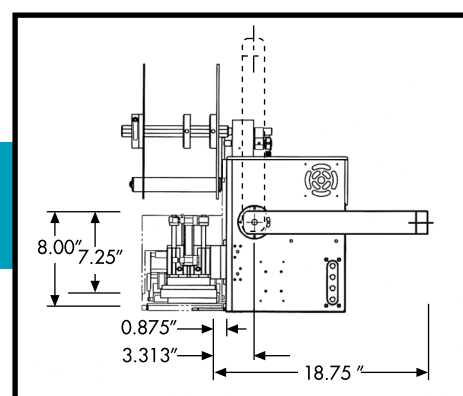
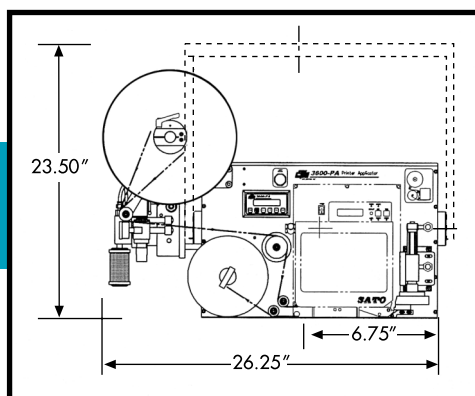
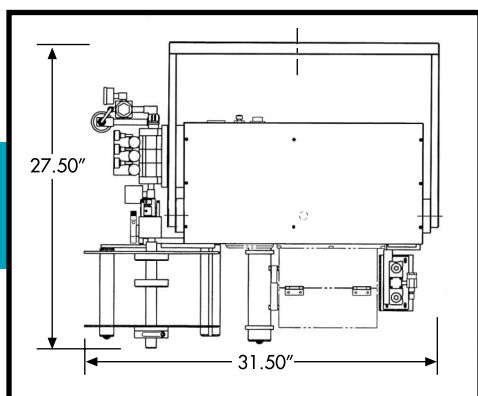
Heavy Duty Construction
Tamp Blow Applicator
External Valves and Controls
Operator Keypad & Display
I/O Connection for PLC
Data Port Connections
12" O.D. Label Roll

Optional

Low Label/Low Ribbon, Out
of Label/Out of Ribbon to
Amber and Red Stack Light;
Green "Ready" also available

End of Web to Alarm Light

Custom Applicators, Stands,
Conveyors, Product Handling
Devices



* Dimensions shown are approximate

QLC

537 Progress Drive
Hartland, WI. 53209

Phone: (262) 367-1 400

Fax: (262) 367-1 405

Toll Free: (800) 837-1 309

Email: info@qlc-labeling.com

CTM **INTEGRATION INC.**
Designers and Manufacturers of
Pressure Sensitive Labeling Equipment
and Custom Product Handling