

Inline Series 6000

Labeling System

The Label-Aire[®] **Inline Series 6000** labeling system is designed to be very easy to configure while also making labeling easier and faster... making you more profitable.

The Inline Series 6000's long list of optional features allows you to easily build a system to meet your specific labeling requirements. Need a simple wrap conveyor system? Or instead, a high-speed front/back system with dual feedscrews and a top trap hold down? With the Inline Series 6000, you can have it your way.

The versatile Inline 6000 is an open frame labeling system that can be outfitted with Label-Aire's full range of New Generation 3100 Series applicators (wipe-on, air-blow, or tamp-blow) and features a delrin chain conveyor in lengths of 6 feet to 12 feet (1,829 mm to 3,658 mm) with a choice of 4.5 inch (114 mm) or 6.0 inch (152 mm) conveyor widths.

The 6000's options include extruded aluminum or stainless steel side plates, speeds up to 1,200 inches (3,048 cm) per minute with the optional Variable Frequency Drive (VFD), user-friendly digital/PLC controls, top trap hold down, single or dual feedscrews with soft start, powered or non-powered impressors for secondary wipe down, metering wheel to aid in product separation, Automatic Speed Following (ASF) for product surface profiling, chain aligner, squeegee wipe-downs, and wrap belt.

Put the latest in modular labeling technology to work for you all day, every day. The Inline Series 6000 is built to meticulous quality standards and designed to meet your most difficult labeling requirements.

Inline Series 6000

Inline Series 6000 Specifications

Dimensions:

Height: 63.9" (1,623 mm)

Length: 120" (3,048 mm)

Width: 84.8" (2,154 mm)

Weight:

Approx. 1,000 lbs. (454 kg)

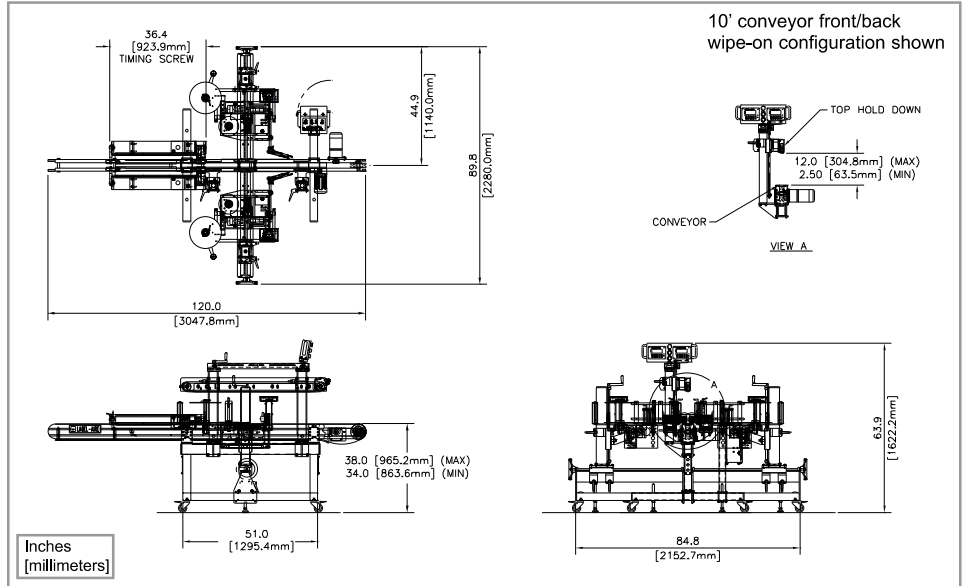
Electrical:

120 Volts AC 60 Hz 20 Amps.

220 Volts AC 50 Hz optional (CE)

Air:

4 cfm at 90 psi to 100 psi required for air-blow and tamp-blow applications



Conveyor:	6' End-to-end	8' End-to-end	10' End-to-end	12' End-to-end
Length	(Wrap only)	(Front/Back or Wrap)	(Front/Back and/or Wrap)	(Front/Back and/or Wrap)
Width (Extrud. Alum. or SS Side Plates)	4.5" or 6.0"	4.5" or 6.0"	4.5" or 6.0"	4.5" or 6.0"
Height	36" ± 2"	36" ± 2"	36" ± 2"	36" ± 2"
Main Drive:	DC Motor	VFD	VFD/PLC	VFD/PLC
Line speed	Up to 1000"/min.	Up to 1200"/min	Up to 1200"/min	Up to 1200"/min
Applicator:	Label-Aire 3100 Series Primary Applicators	Label-Aire 3100 Series Primary Applicators	Label-Aire 3100 Series Primary Applicators	Label-Aire 3100 Series Primary Applicators
Operator Interface:	Electronic Box/ Applicators Analog	Electronic Box/ Revolving Dual Keypad Digital/PLC	Electronic Box/ Revolving Dual Keypad Digital/PLC	Electronic Box/ Revolving Dual Keypad Digital/PLC
Control				
Top Hold Down:	N/A	~24", Linatex	~24" or 50.5", Linatex	~24" or 50.5", Linatex
Vertical Adjustment	N/A	12"	12"	12"
Belt Width	N/A	1"	1"	1"
Drive	N/A	VFD	VFD	VFD
Feedscrew:	N/A	Single or Dual	Single or Dual	Single or Dual
Length Options	N/A	24.0"	30.0"	30.0"
Drive	N/A	VFD	VFD	VFD
Soft Start	N/A	Yes	Yes	Yes
Metering Wheel (Optional):	Single	Single	Single	Single
Wheel Diameter	6.0"	6.0"	6.0"	6.0"
Drive	DC Motor	DC Motor	DC Motor	DC Motor
ASF (Optional):	N/A	Yes	Yes	Yes
Chain Aligner (Optional):	N/A	DC Motor	DC Motor	DC Motor
Drive				
Wrap Belt (Optional):	(4.0" or 7.0") Wide x 12.0" Long	(4.0" or 7.0") Wide x 12.0" Long	(4.0" or 7.0") Wide x 12.0" Long	(4.0" or 7.0") Wide x 12.0" Long
Drive	DC Motor	VFD	VFD	VFD
Secondary Impressors (Optional):	DC Speed Control Available	DC Speed Control Available	DC Speed Control Available	DC Speed Control Available
Powered				
Non-Powered				

Consult factory for additional options.

ASF = Automatic Speed Following SS = Stainless Steel VFD = Variable Frequency Drive



QLC

537 Progress Drive

Hartland, WI. 53209

Phone: (262) 367-1 400

Fax: (262) 367-1 405

Toll Free: (800) 837-1 309

Email: info@qlc-labeling.com